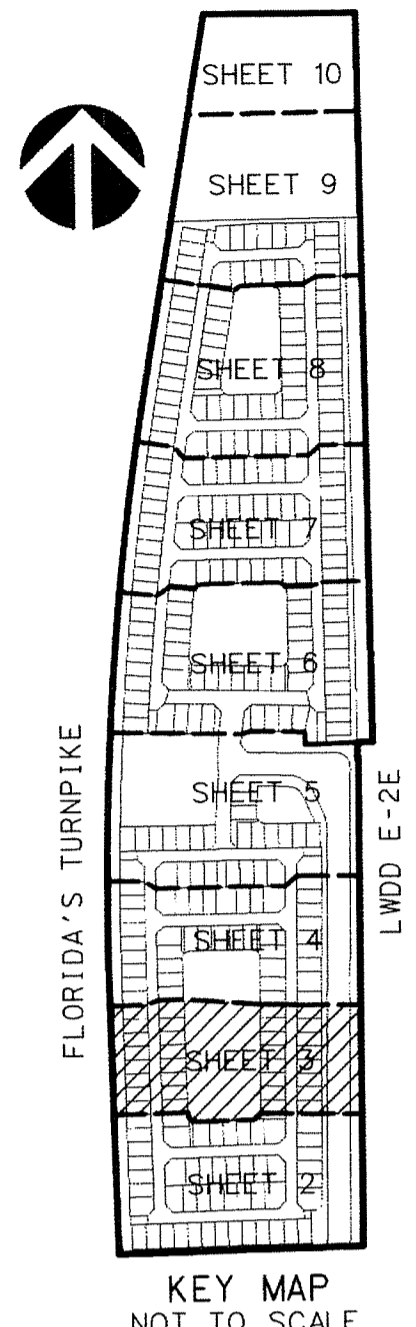


PERIMETER

SURVEYING & MAPPING
 Certificate of Authorization No. LB7264
 Prepared by: Jeff S. Hodapp, P.S.M.
 947 Clint Moore Road
 Boca Raton, Florida 33487
 Tel: (561) 241-9988
 Fax: (561) 241-5182



ATLANTIC COMMONS - PLAT FIVE

A REPLAT OF PORTIONS OF TRACTS 1-3 AND 30-35 IN SECTION 17, TOWNSHIP 46 SOUTH, RANGE 42 EAST,
 AND PORTIONS OF TRACTS 65, 66, 94-99 AND 126-128 IN SECTION 8, TOWNSHIP 46 SOUTH, RANGE 42 EAST,
 OF "PALM BEACH FARMS CO. PLAT NO.1" (P.B. 2, PGS 26-28, P.B.C.R.)
 PALM BEACH COUNTY, FLORIDA.

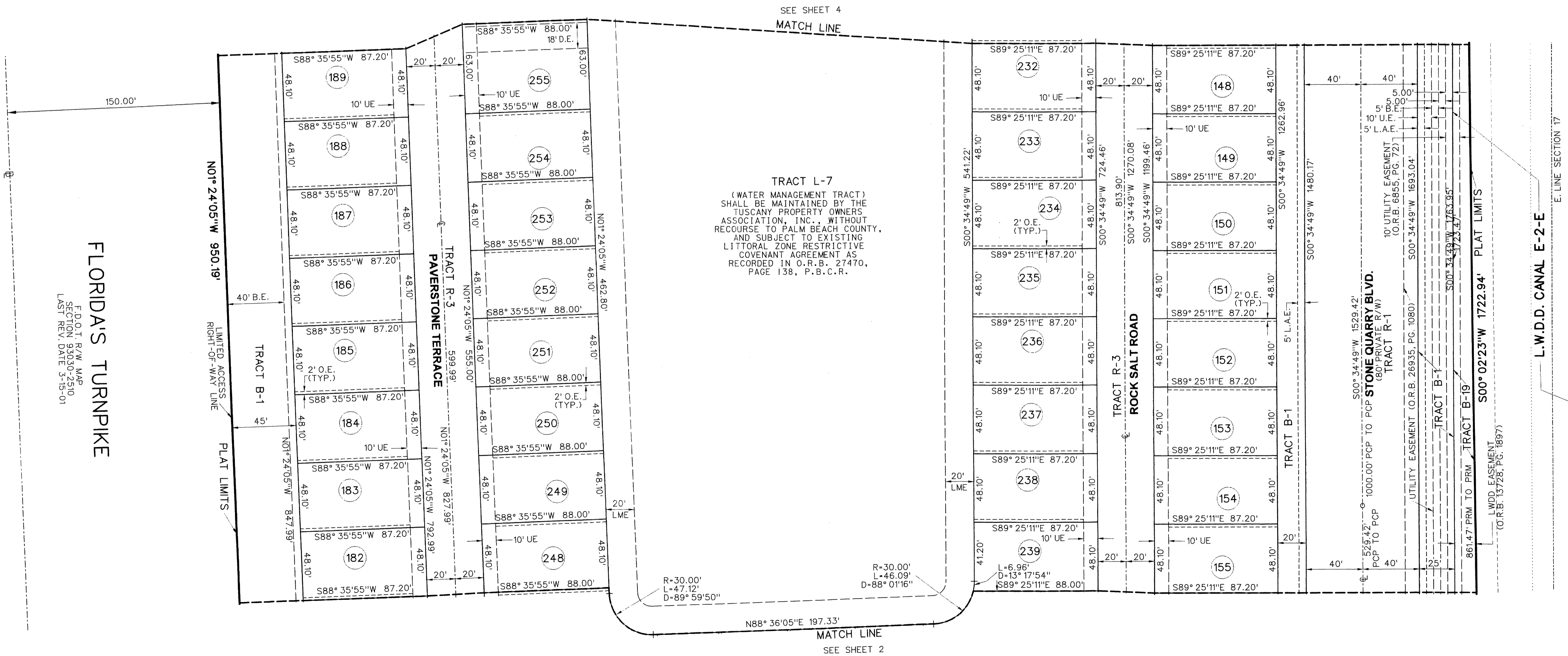
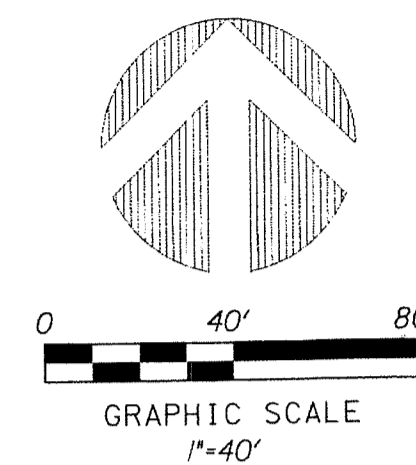
LEGEND:

- SET P.R.M. (UNLESS OTHERWISE NOTED)-4" X4" CONC. MON. WITH ALUMINUM DISK STAMPED P.R.M. •LB7264
- PERMANENT CONTROL POINT (NAIL & DISK •LB7264)
- ℄ CENTERLINE

ABBREVIATIONS:

- ALUM ALUMINUM
- B.E. BUFFER EASEMENT
- CH CHORD
- CHB CHORD BEARING
- CONC. CONCRETE
- COR. CORNER
- Δ DELTA (CENTRAL ANGLE)
- D.E. DRAINAGE EASEMENT
- D.T. DRIVEWAY TRACT
- FND. FOUND
- L ARCLength
- L.A.E. LIMITED ACCESS EASEMENT
- L.B.E. LANDSCAPE BUFFER EASEMENT
- L.B. LICENSED BUSINESS
- L.E. LANDSCAPE EASEMENT
- L.M.E. LAKE MAINTENANCE EASEMENT
- L.M.A.E. LAKE MAINTENANCE ACCESS EASEMENT
- L.S. LICENSED SURVEYOR
- L.S.E. LIFT STATION EASEMENT
- L.W.D.D. LAKE WORTH DRAINAGE DISTRICT

- MON. MONUMENT
- O.E. OFFICIAL RECORDS BOOK
- O.R.B. NON-RADIAL
- N.R. PLAT BOOK
- P.B. PALM BEACH COUNTY
- P.S.C. PALM BEACH COUNTY RECORDS
- P.B.C.R. PALM BEACH COUNTY UTILITY EASEMENT
- P.B.C.U.E. PAGE
- P.C.P. PERMANENT CONTROL POINT
- P.O.B. POINT OF BEGINNING
- P.O.C. POINT OF COMMENCEMENT
- P.R.M. PERMANENT REFERENCE MONUMENT
- P.S.M. PROFESSIONAL SURVEYOR & MAPPER
- P.U.D. PLANNED UNIT DEVELOPMENT
- R RADIUS
- RAD RADIAL
- R.P.B. ROAD PLAT BOOK
- R/W RIGHT-OF-WAY
- SEC. SECTION
- S.F. SQUARE FEET
- U.E. UTILITY EASEMENT



FLORIDA'S TURNPIKE
 F.D.O.T. PAV. MAP
 SECTION 94030-2510
 LAST REV. DATE 3-15-01

HAGAN RANCH HEIGHTS
 (P.B. 63, PGS. 71-78)